

S2COSMOS

Yuichi Matsuda (NAOJ)

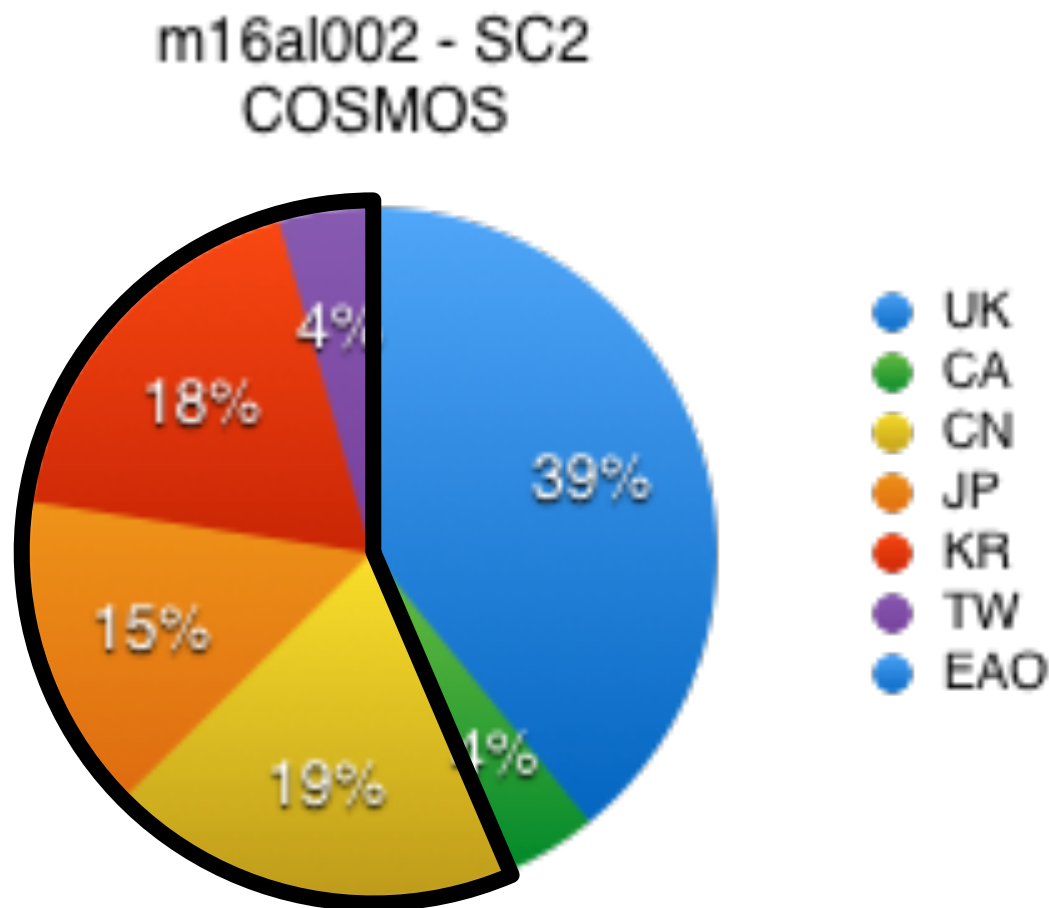
Ian Smail (UK, survey contact), Scott Chapman (Canada),
Ran Wang (China), Yujin Yang (Korea), Wei-Hao Wang (Taiwan)
& the S2COSMOS team

Team members

- We have 80 members (more than double the number of those named on the initial proposal)

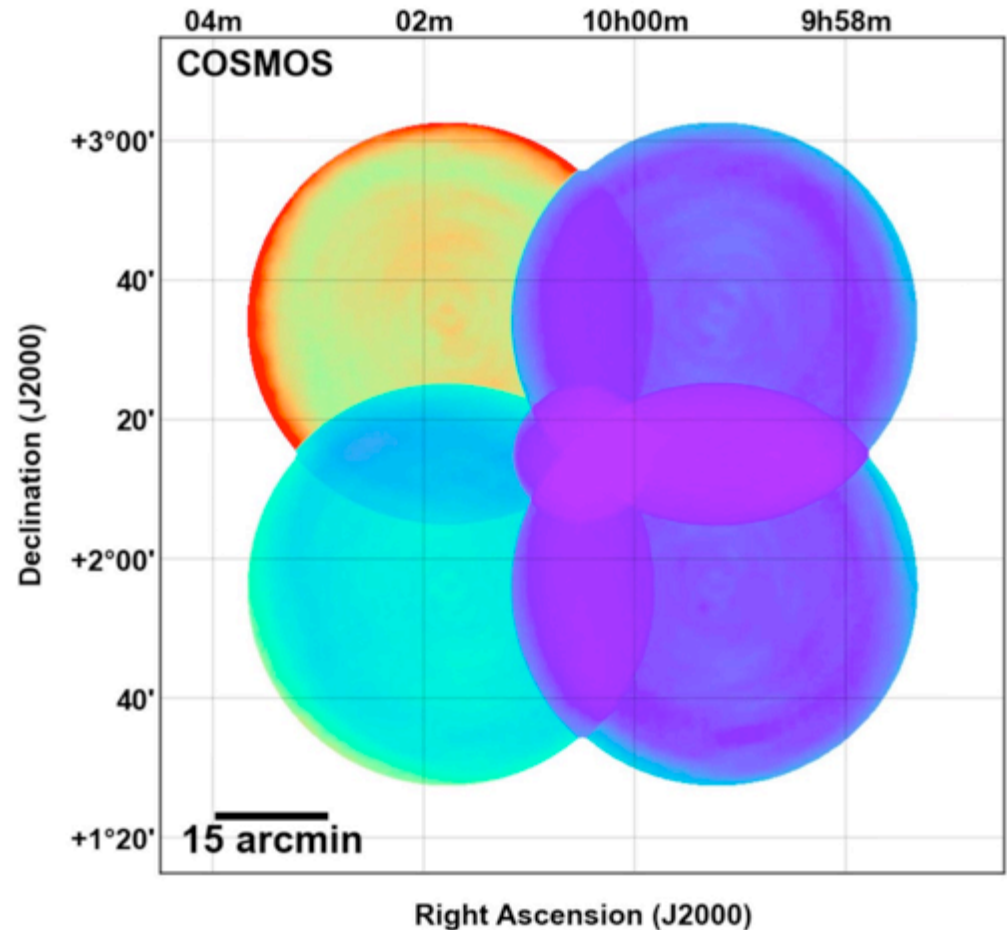
This is an obvious continuation of SCUBA-2 Cosmology Legacy Survey (S2CLS)

But 60% of the members are from East-Asia (EA)



Goals

- 1) To complete a 1.5-mJy rms 850 μ m map of the full 2-deg² field (partly covered by S2CLS)
- 90hr
- 2) To increase the depth of this map to 1.2mJy rms to provide a sample of \sim 1000 SMGs
- 140hr

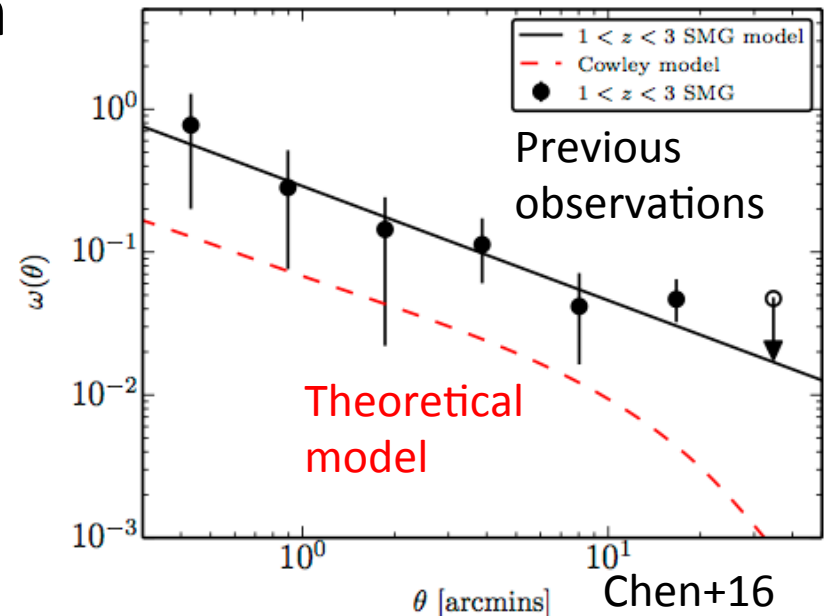
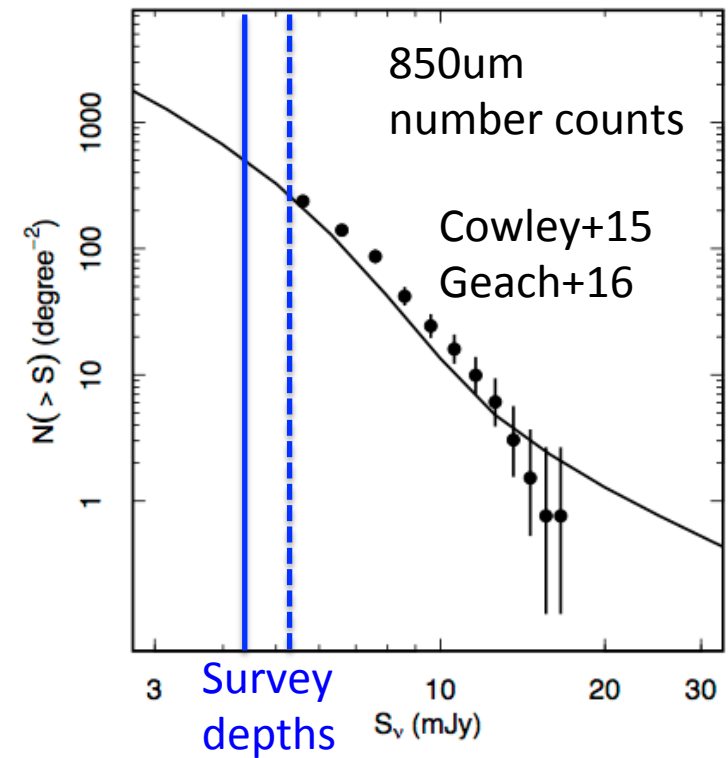


850 μ m map of the COSMOS field
taken by the previous survey (S2CLS)

Uniqueness

The complete S2COSMOS map will have twice the area of similar surveys in a single contiguous field.

Large (~ 1000) sample of submm sources in the 2-deg^2 ($\sim 8 \times 10^7 \text{ Mpc}^3$) field will allow unique tests of their clustering (and multi-wavelength) properties.

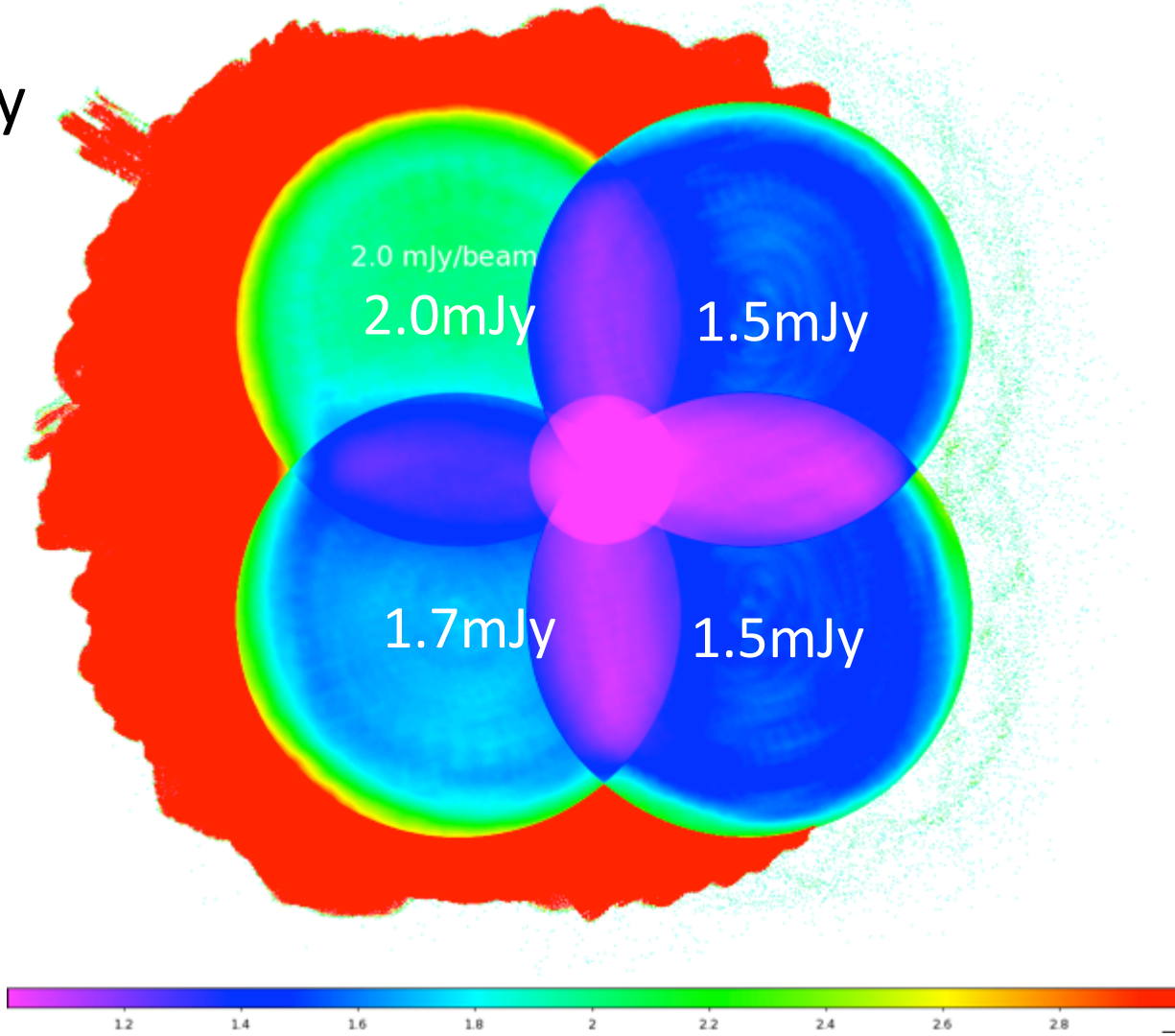


Current Status

- We are now 57% complete (127/223hours)

The rms is 1.5-1.7mJy on three of the quadrants and is currently ~2mJy on the final (north-east) pointing (Mar 2016)

We are proposing at least 2 ALMA follow-ups from EA and UK



Team Wiki

- We have setup a wiki to coordinate the scientific planning and exploitation of the survey by the team members

My PBworksWorkspaces ▾s2cosmos

WikiPages & Files

Search this workspace

VIEWEDIT

☆ FrontPage

last edited by [ian.smali@durham.ac.uk](#) 2 weeks, 5 days ago

Page history

S2COSMOS EAO/JCMT Large Programme

This is the home page for the S2COSMOS SCUBA-2 survey – an EAO Large Programme to complete and extend the SCUBA-2 coverage of the COSMOS field.

This project builds upon the existing S2CLS coverage of COSMOS in a two-phase approach: first completing the coverage of the full field to the depth of the deepest existing S2CLS maps ($\sigma_{850}=1.5\text{mJy rms}$) and then increasing the depth of the full 2 degree^2 field to $\sigma_{850}=1.2\text{mJy rms}$.

Preliminary dataset (v0) produced by TC Chen can be obtained from [here](#) (ID/pwd: s2cosmos/NotS2CLS) (29/03 /2016). This contains data taken up to the middle of March 2016.

Contents:

1. Original survey proposal [S2COSMOS case.pdf](#)
2. Project delivery plan (10/2/16) [S2COSMOS ProjectPlan.pdf](#)
3. [Proposed publications](#)
4. [Follow-up proposals](#)
5. [Observing strategy](#)
6. [Survey staffing](#)
7. [Membership](#)

Create a page

Upload files

Share this page

Put this page in a folder

Add Tags

Copy this page

Navigator

★ Starred Pages and Files

• Activity Tracking

• Assignments

• Blank Page

• Course

• Follow-up proposals

PagesFilesoptions

SideBar

This is your Sidebar, which you can edit like any other page in your workspace.

This Sidebar appears everywhere on your

Team Wiki

- We have setup a wiki to coordinate the scientific planning and exploitation of the survey by the team members (all members are listed in membership page)

The screenshot shows a web interface for a Team Wiki. At the top, there's a navigation bar with 'My PBworks', 'Workspaces' (with a dropdown arrow), and 's2cosmos'. On the right, there's a user profile for 'matsuda' with links for 'account', 'log out', and 'help'. Below the navigation bar, there are tabs for 'Wiki' and 'Pages & Files'. A search bar on the right says 'Search this workspace'. The main content area has a 'VIEW' and 'EDIT' toggle. The page title is 'Membership' with a star icon. Below the title, it says 'last edited by ian.smali@durham.ac.uk 2 months ago' and a 'Page history' link. The main heading is 'Membership of S2COSMOS Consortium'. The text describes the consortium's membership criteria and lists coordinators. On the right, there's a sidebar with options: 'Create a page', 'Upload files', 'Share this page', 'Put this page in a folder', 'Add Tags', and 'Copy this page'. At the bottom right, there's a 'Navigator' section with a list of pages: 'Starred Pages and Files', 'Activity Tracking', 'Assignments', 'Blank Page', 'Course', and 'Follow-up proposals'. Below that is a 'SideBar' section with a message: 'This is your Sidebar, which you can edit like any other page in your workspace. This Sidebar appears everywhere on your workspace.'

My PBworks Workspaces s2cosmos matsuda account log out help

Wiki Pages & Files Search this workspace

VIEW EDIT

★ Membership

last edited by ian.smali@durham.ac.uk 2 months ago Page history

Membership of S2COSMOS Consortium

Membership of the consortium was open to all members of eligible EAO partner countries until February 1 2016.

The following gives a list of all those who signed up. Note that membership of the consortium comes with the expectation that you will aid in staffing the telescope observing runs or provide other support to the project. Members who leave the partner countries/institutes during the course of the project may be retained in the consortium if they have contributed to the project. This will be decided on by the coordinators.

Coordinators:

Scott Chapman scott.chapman@dal.ca – S2COSMOS–Ca coordinator
Ran Wang rwangpku@gmail.com – S2COSMOS–CN coordinator
Yujin Yang yyang@kasi.re.kr – S2COSMOS–KR coordinator
Yuichi Matsuda yuichi.matsuda@nao.ac.jp – S2COSMOS–JP coordinator
Wei-Hao Wang whwang@asiaa.sinica.edu.tw – S2COSMOS–TW coordinator
Ian Smail ian.smali@durham.ac.uk – S2COSMOS–UK coordinator

Members on original proposal:

jiangKIAA@pku.edu.cn
yugao@pmo.ac.cn

Create a page
Upload files
Share this page
Put this page in a folder
Add Tags
Copy this page

Navigator

- ★ Starred Pages and Files
 - Activity Tracking
 - Assignments
 - Blank Page
 - Course
 - Follow-up proposals

Pages Files options

SideBar

This is your Sidebar, which you can edit like any other page in your workspace.

This Sidebar appears everywhere on your workspace.

Summary

- S2COSMOS is an EAO SCUBA-2 survey of 1,000 SMGs in the COSMOS field
- We have 80 members (60% are from EA)
- S2COSMOS will allow unique tests of the clustering of SMGs
- We are 57% complete (127/223hours)