

Dense Gas and Star Formation Rate in M51

Hao Chen
(Nanjing University)

Supervisors:

Qiusheng Gu (Nanjing University, China)

Yu Gao (Purple Mountain Observatory, China)

Jonathan Braine (Bordeaux 1 University, France)

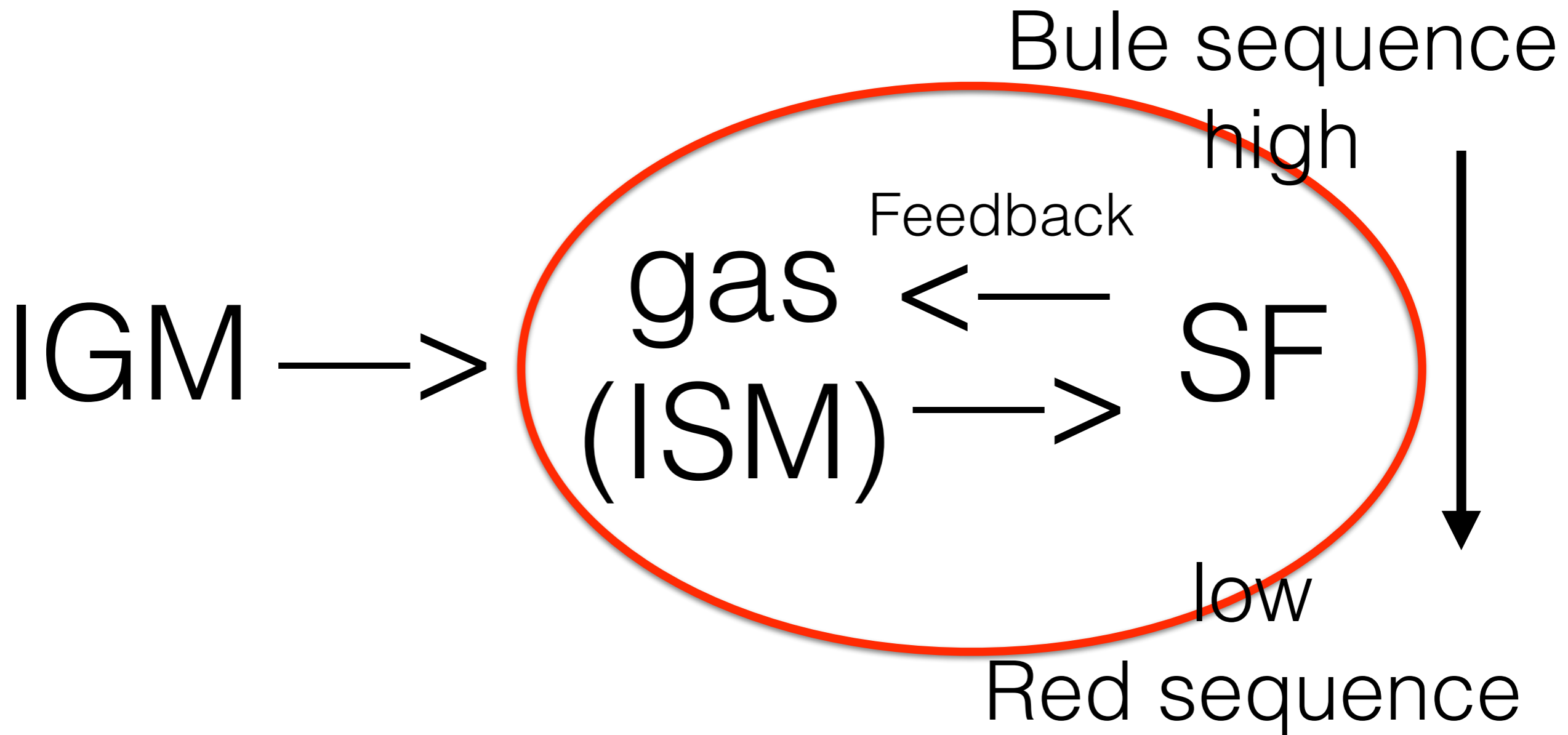
Cooperators:

Jin Koda (Stony Brook University, USA)

Chen et al. ApJ 2015

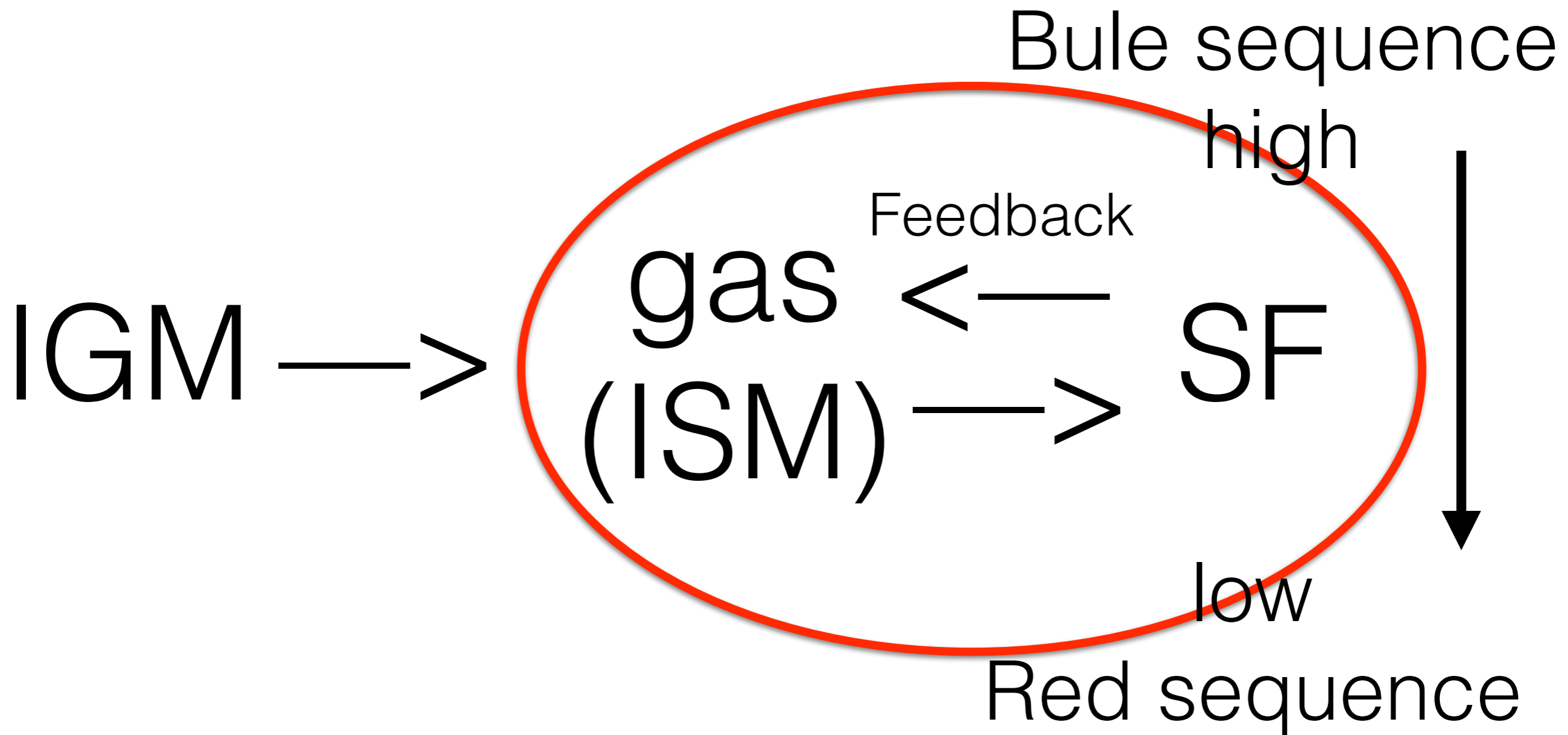
Chen et al. ApJ 2017

Why study the **gas** and **star formation** in the galaxies?



$$SFE \sim SFR/M(\text{gas}) \sim IR/HCN$$

Why study the **gas** and **star formation** in the galaxies?



$$SFE \sim SFR/M(\text{gas}) \sim IR/HCN$$

HCN - IR linear relation

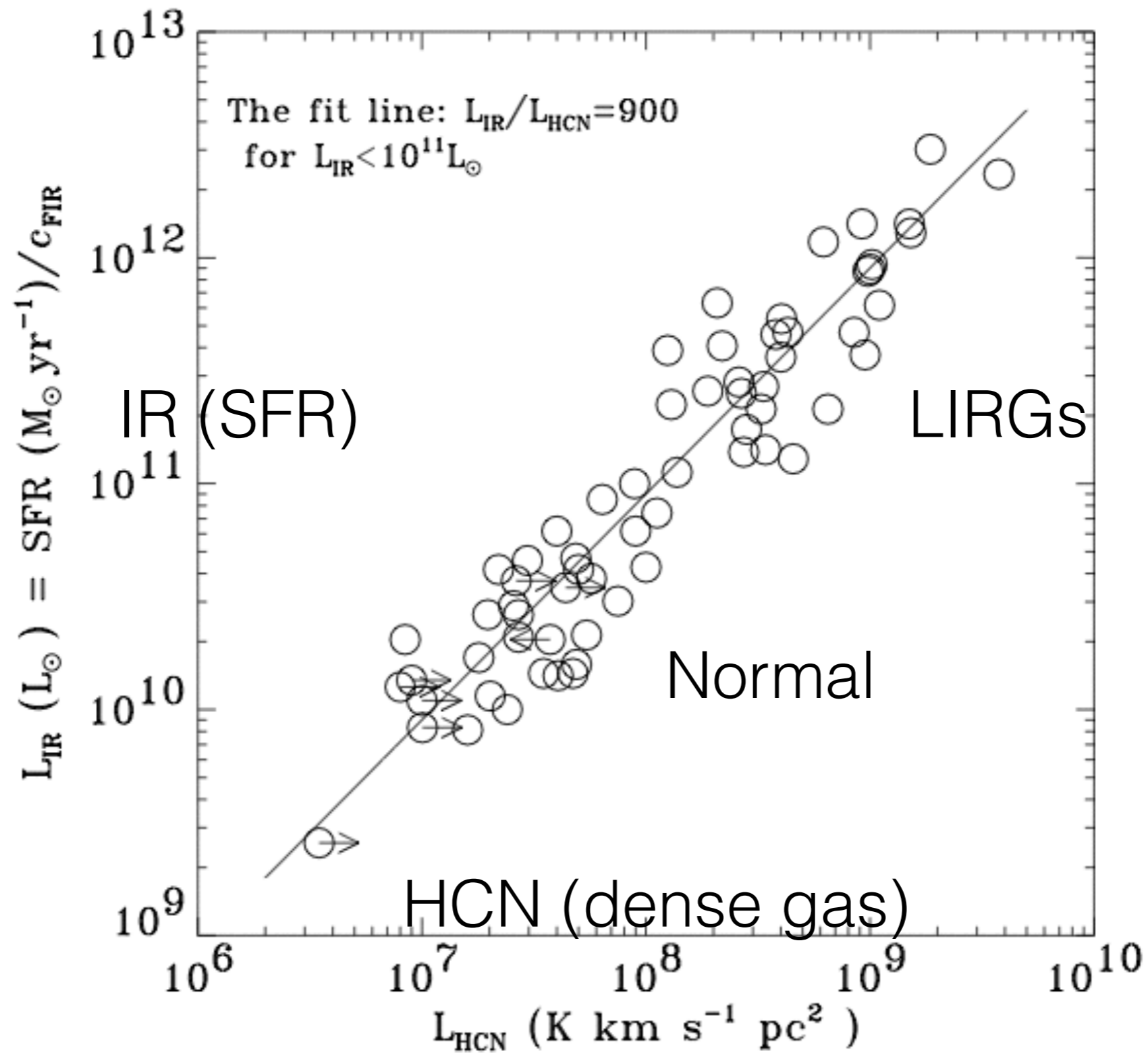
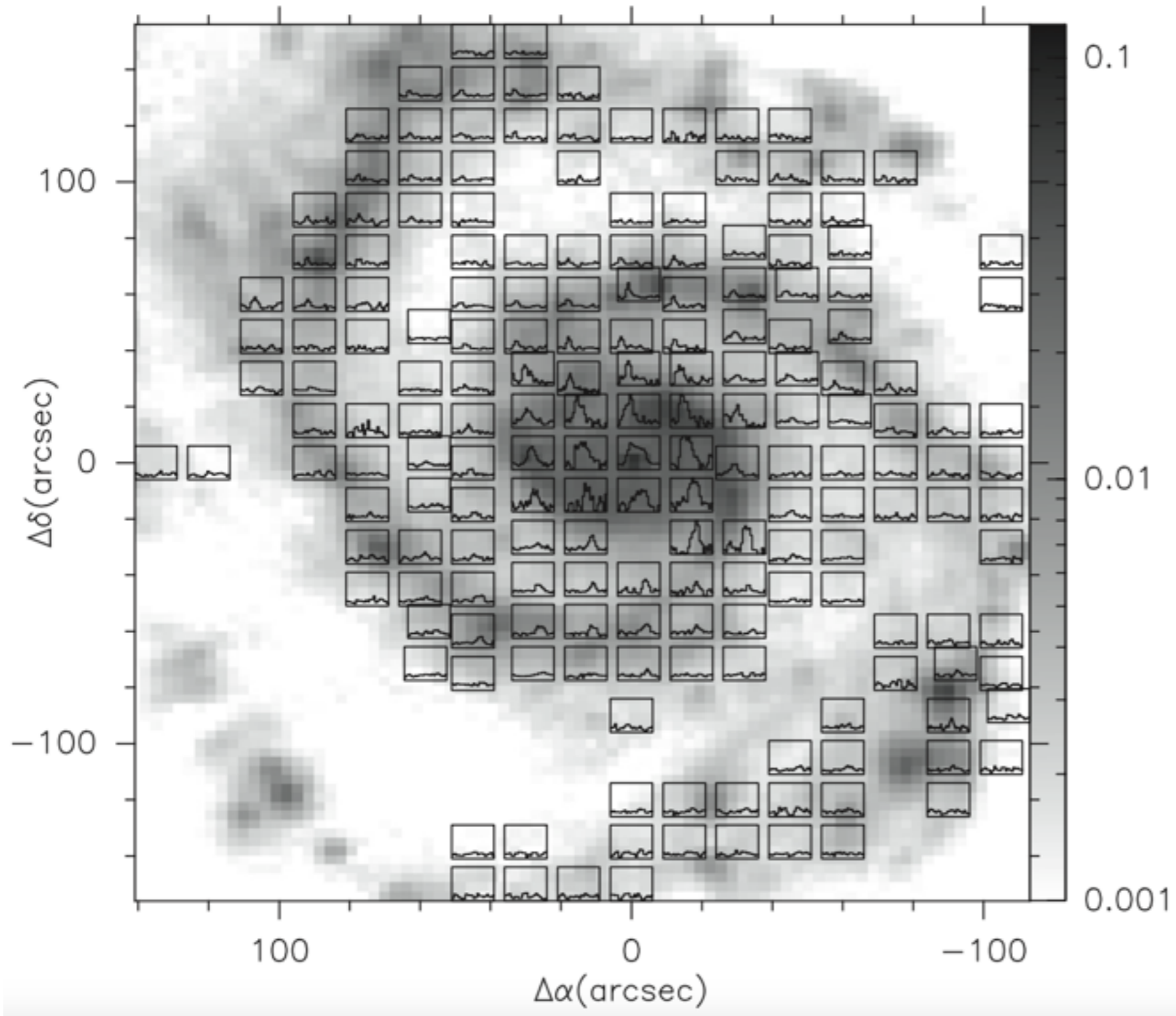


FIG. 1a

Gao & Solomon *ApJ* 2004

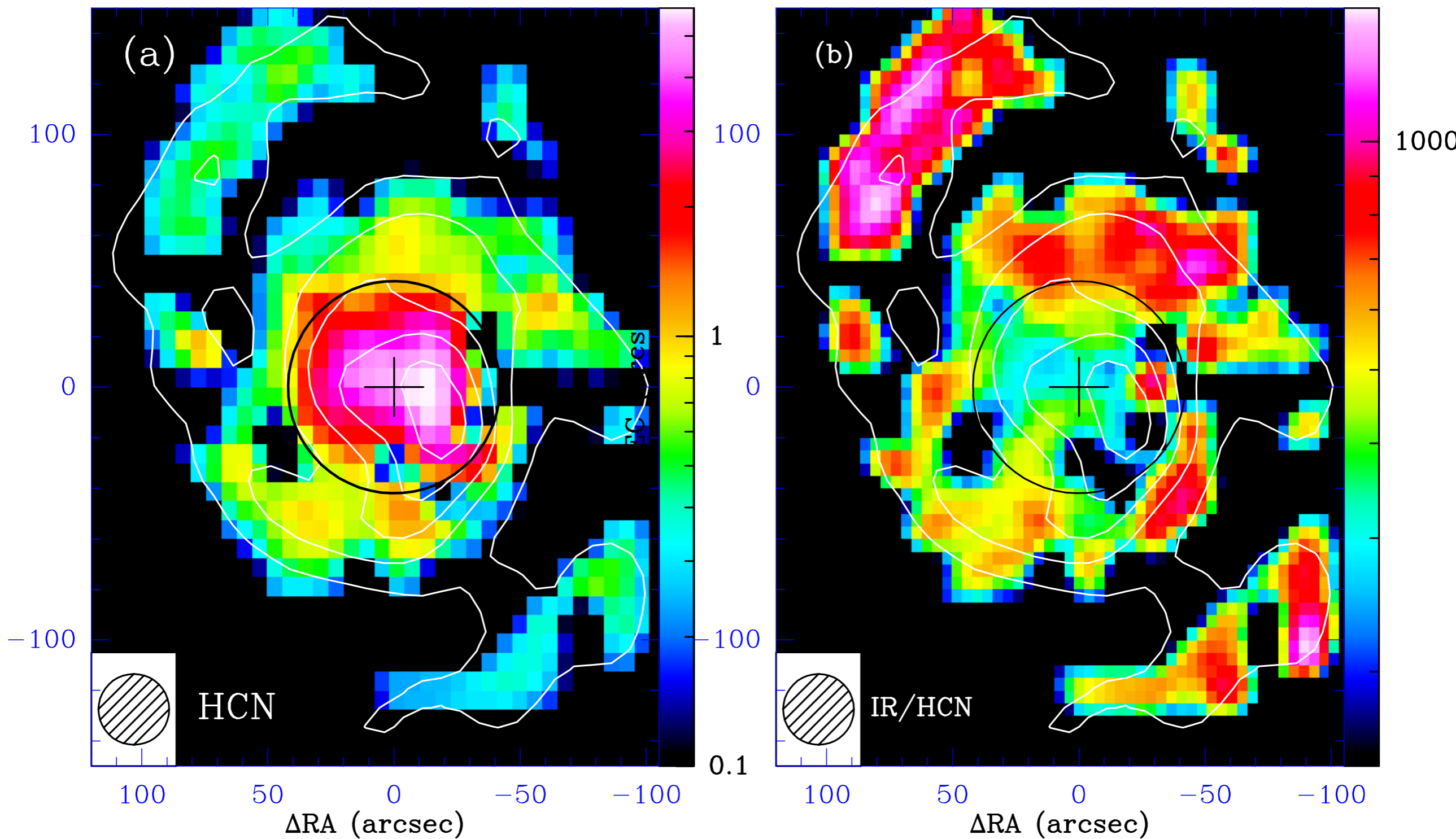
HCN 1-0 lines in M51



- HCN spectra observed with IRAM 30M
- grey map is 70 um map (Herschel VNGS project)
- IR - HCN point by point

HCN integrated intensity

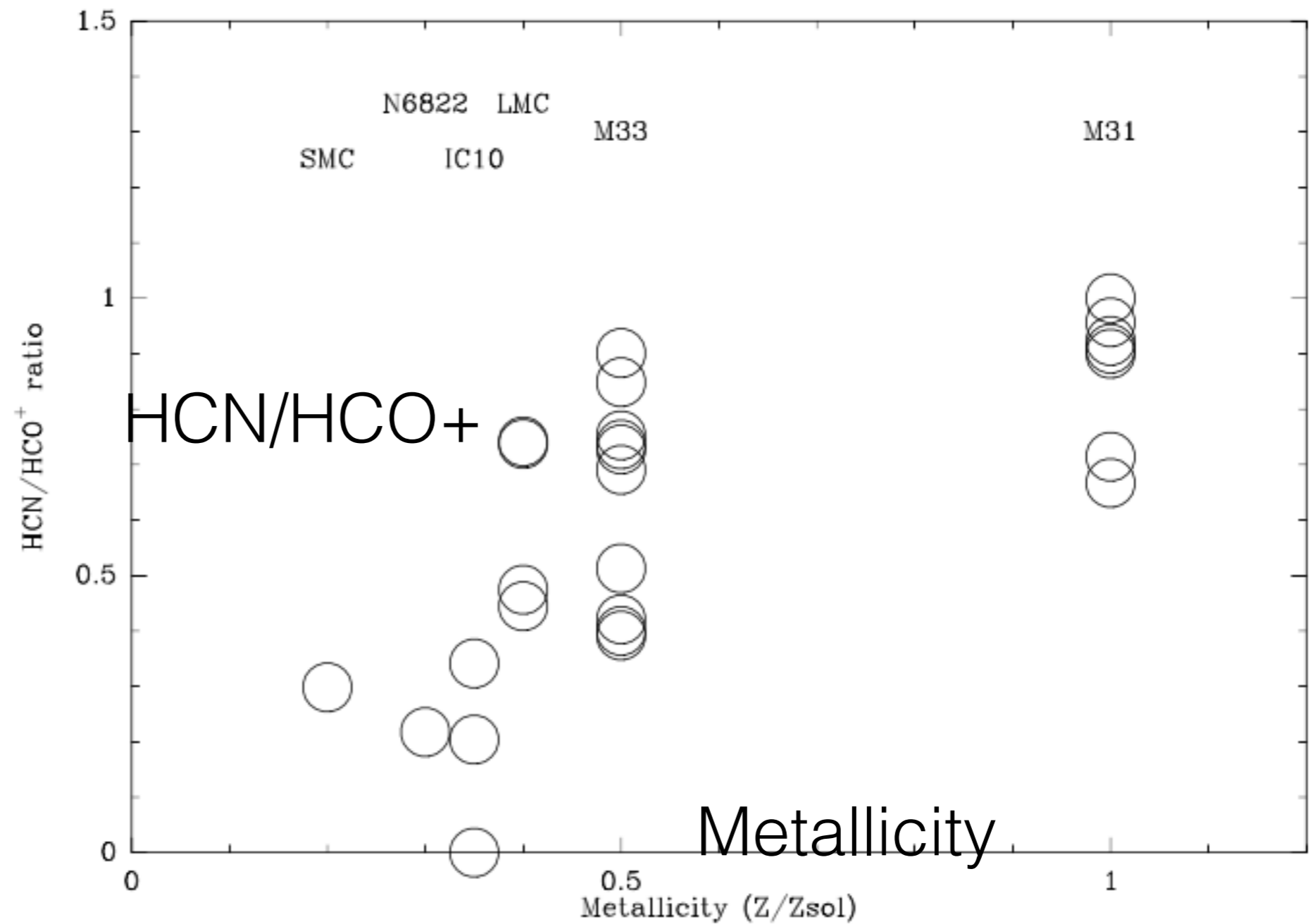
IR/HCN ratio (SFE)



Chen et al. Apj 2015

IR/HCN gradient

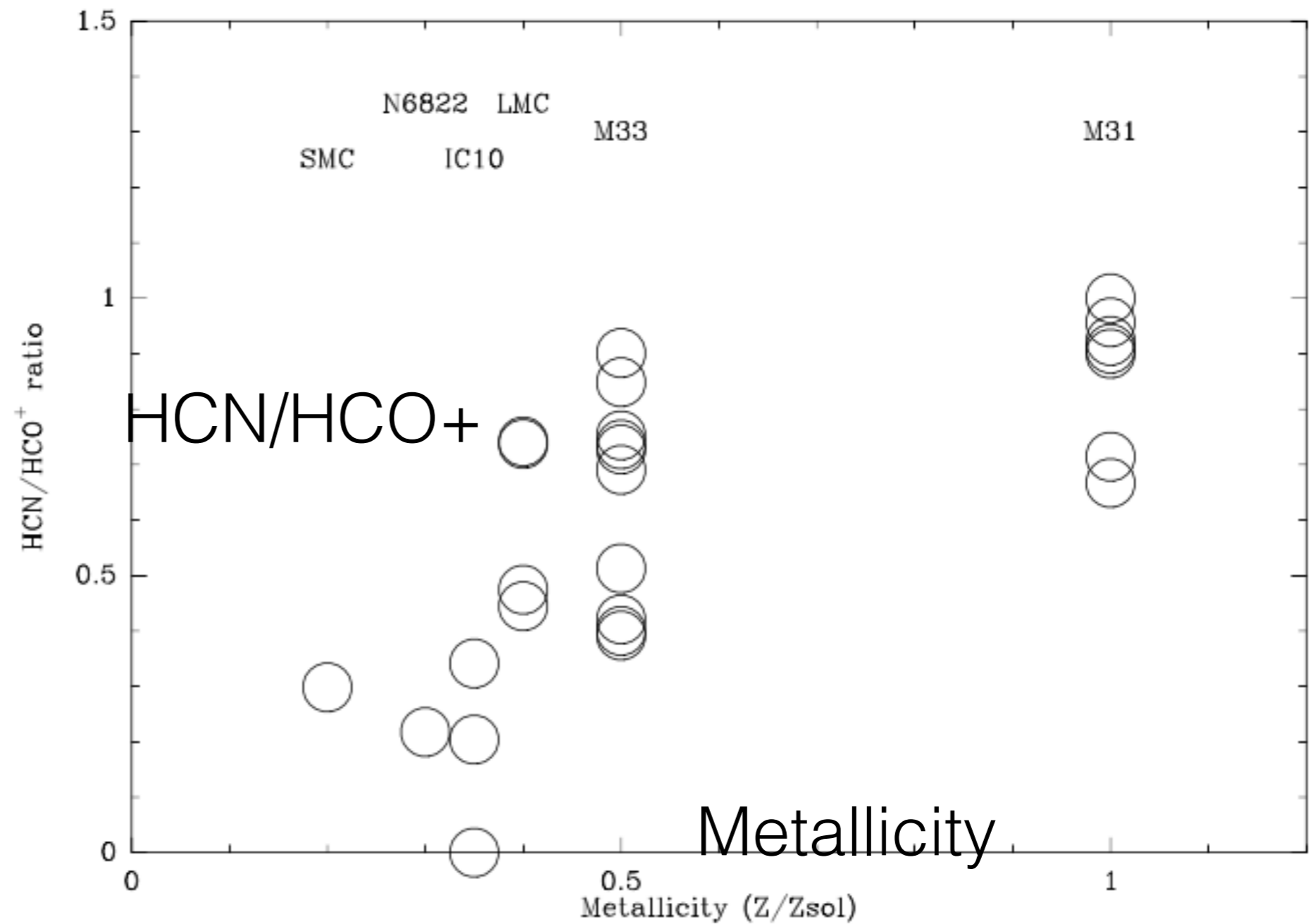
- metallicity
- turbulence
- pressure



Braine et al. A&A 2016

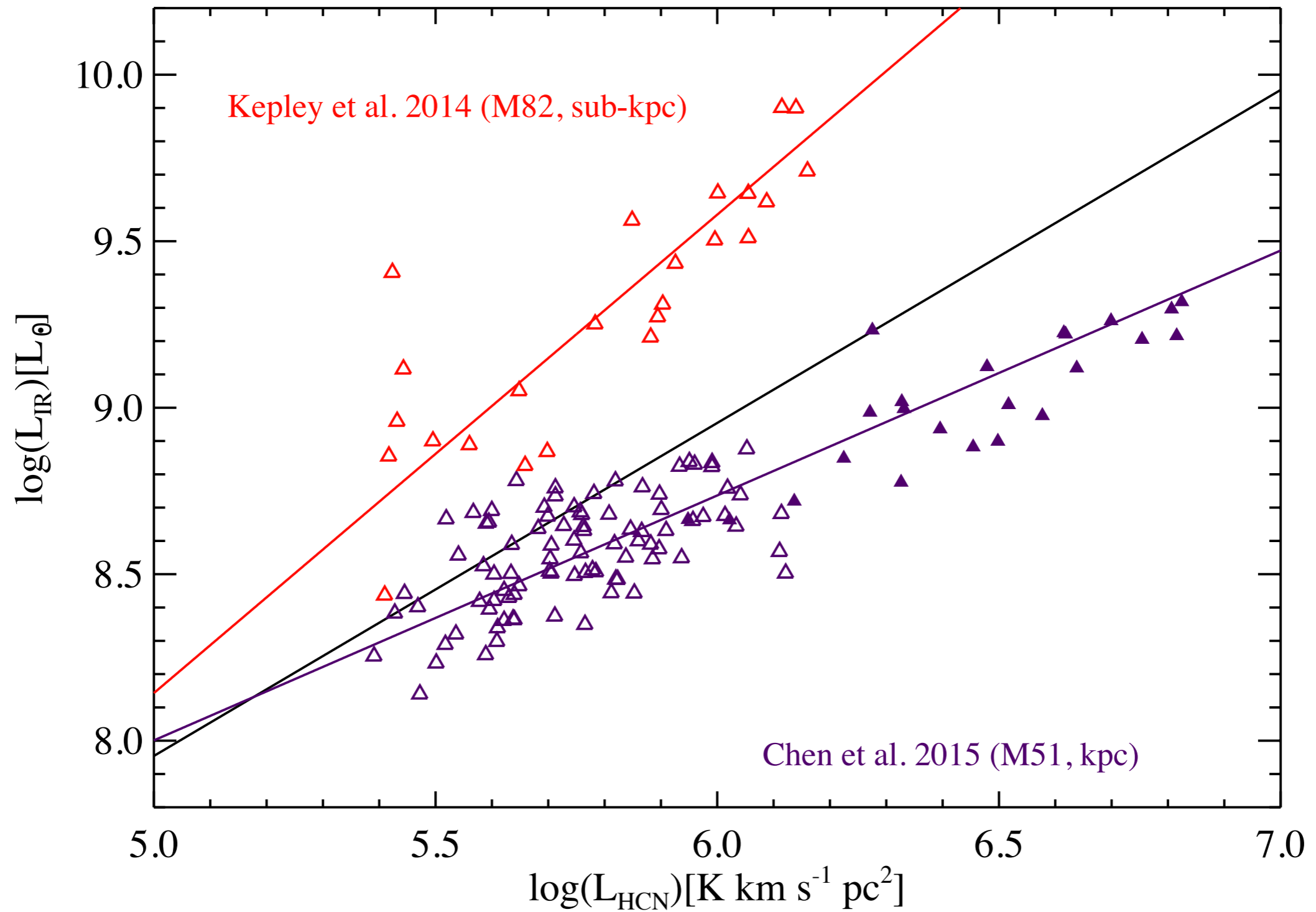
IR/HCN gradient

- metallicity
- turbulence
- pressure



Braine et al. A&A 2016

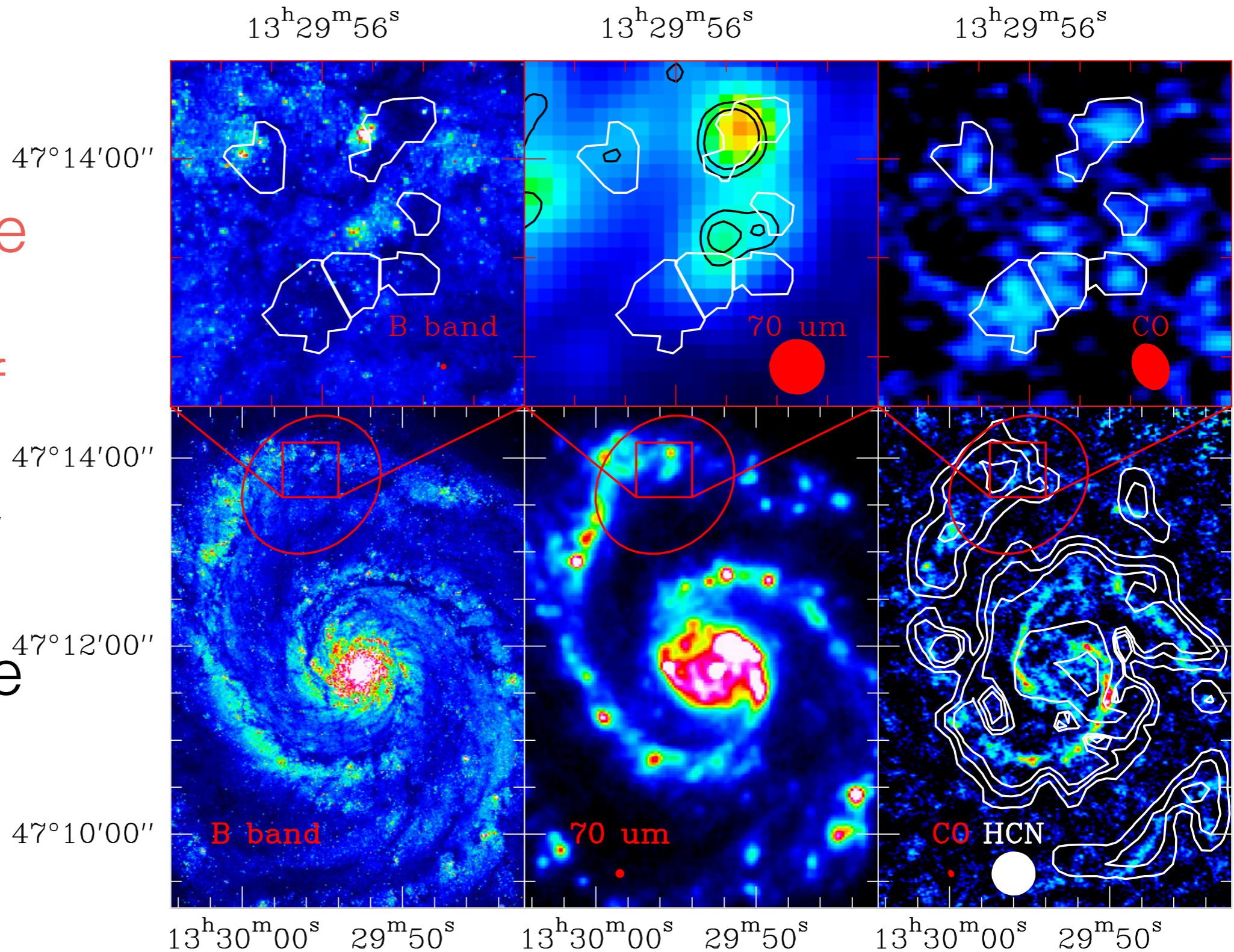
Central starburst



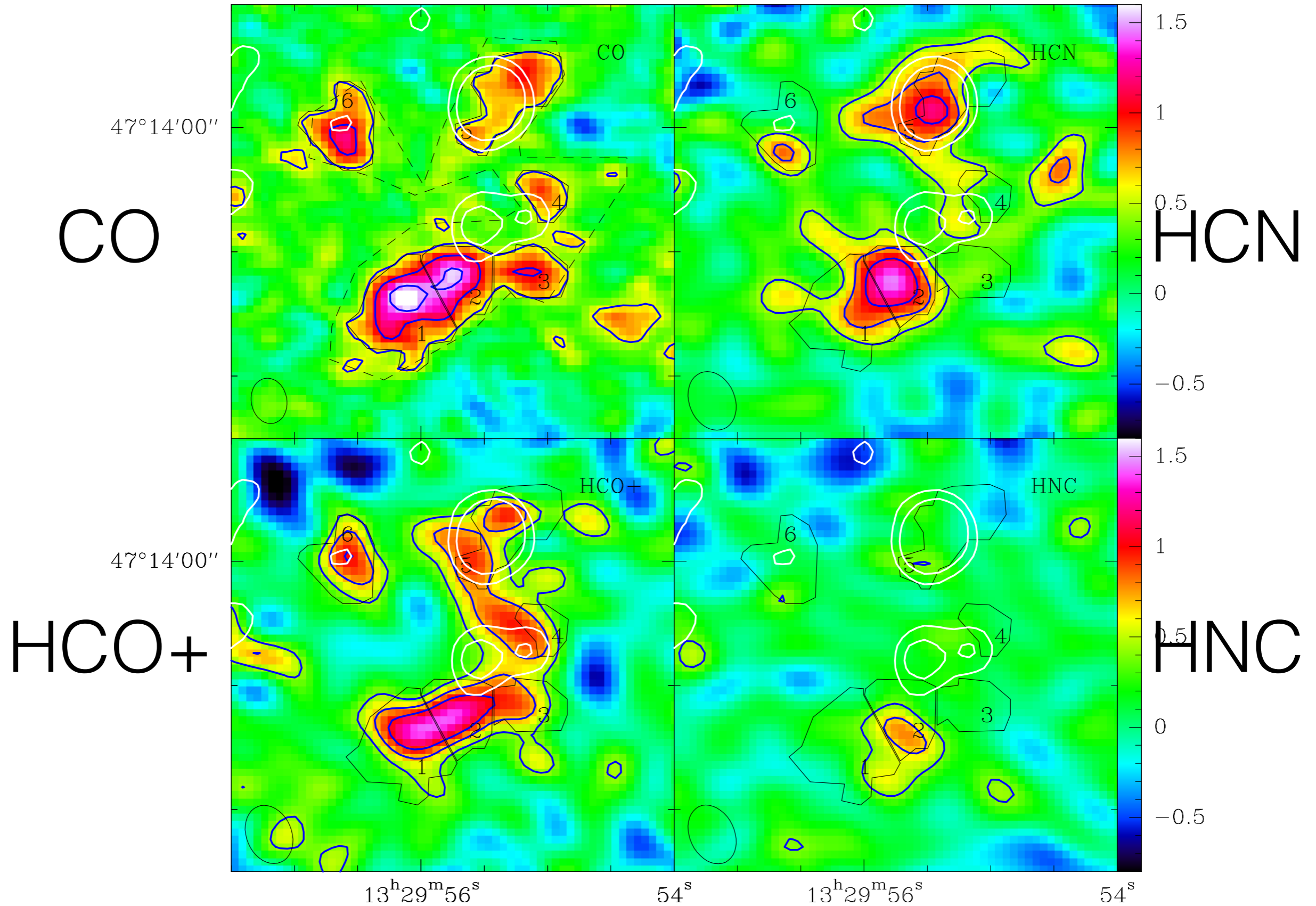
Dense Gas at GMA scale

Eliminate the radial variations of

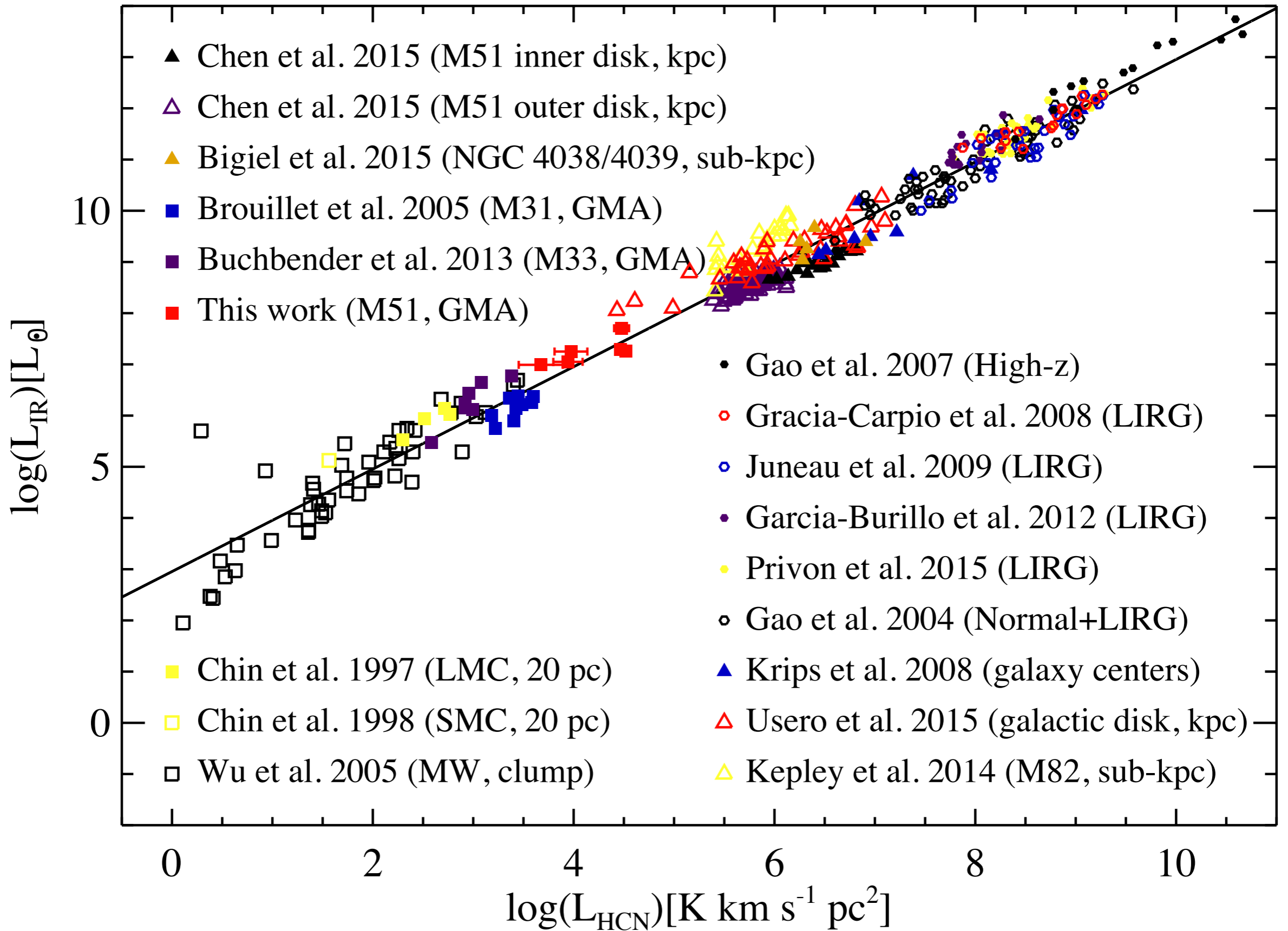
- metallicity
- turbulence
- pressure

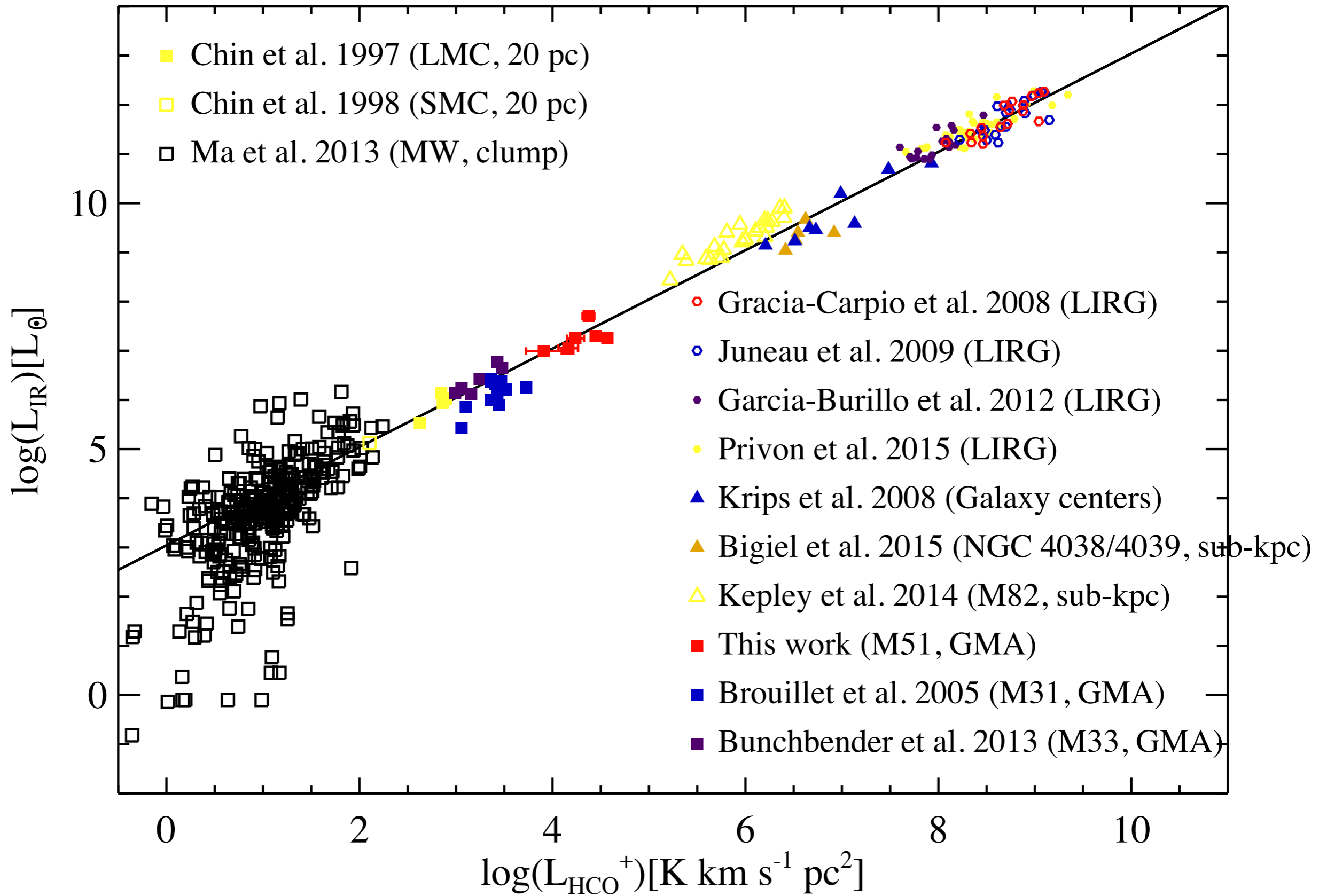


Dense Gas at GMA scale, with NOEMA

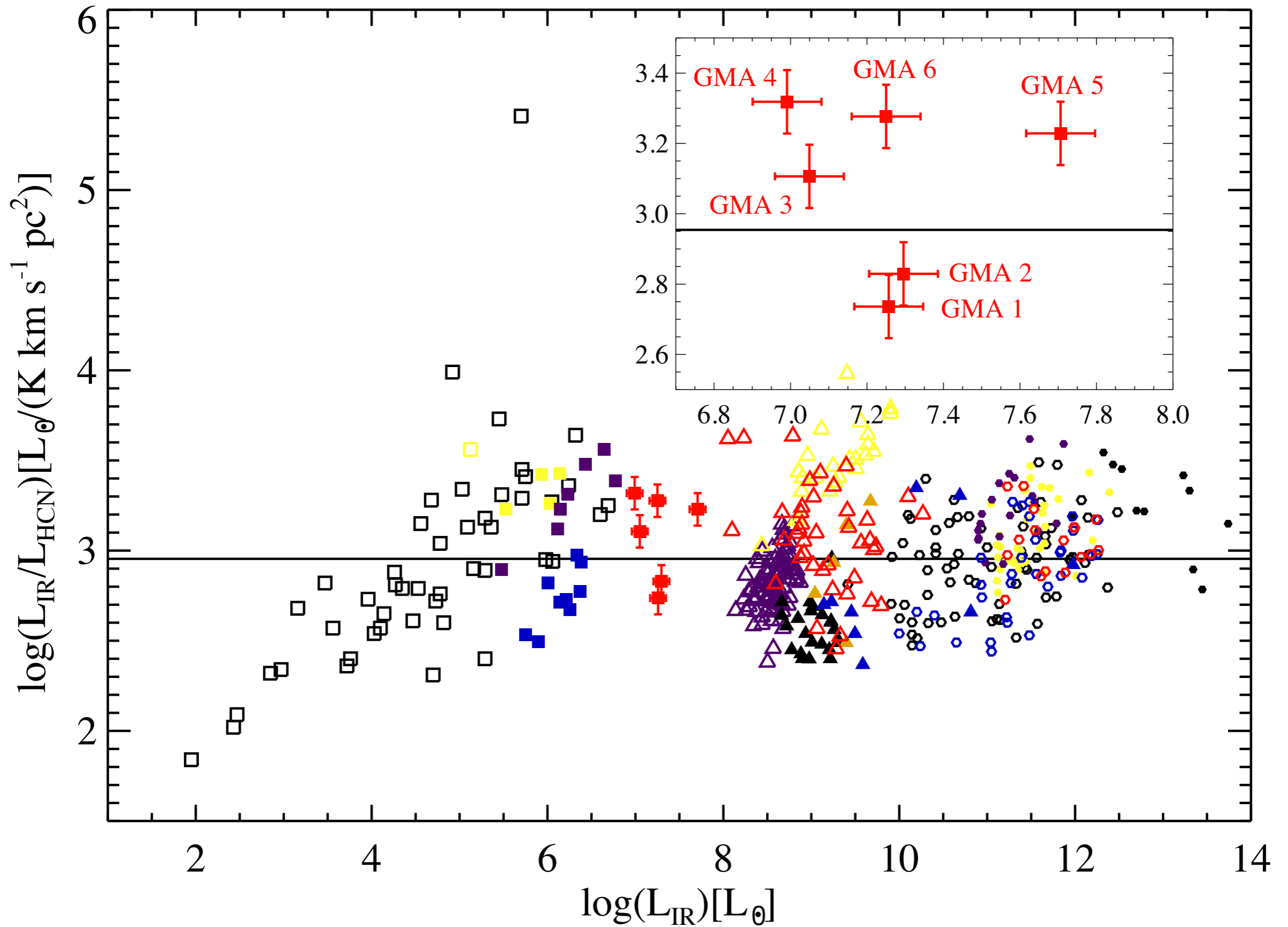


Chen et al. ApJ 2017

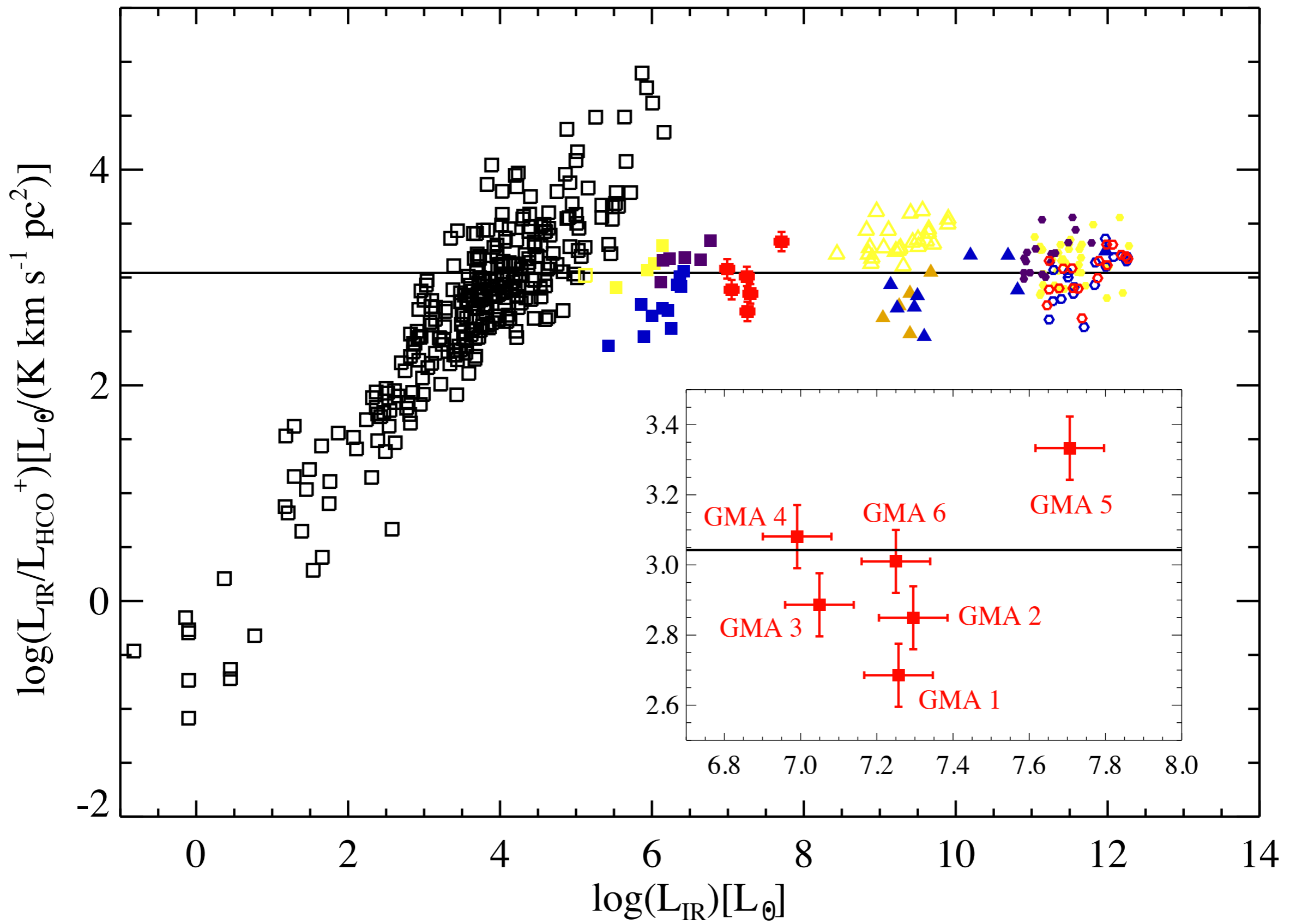




Chen et al. ApJ 2017



Chen et al. ApJ 2017



Chen et al. ApJ 2017

Thanks!